



# MIGIWA<sup>®</sup>

## KINOPROL<sup>®</sup> ACTIVE

### F U N G I C I D E



**MIGIWA contains 218 g/L ipflufenquin (MOA Group 52)**

## A valuable addition to wine grape fungicide programs

### MIGIWA has a Novel Group 52 Compound

MIGIWA<sup>®</sup> KINOPROL<sup>®</sup> ACTIVE is a translaminar fungicide for the control of grey mould, also known as Botrytis bunch rot, caused by *Botrytis cinerea* in wine grapes.

MIGIWA contains the active ingredient ipflufenquin, also known as KINOPROL. This novel chemistry is the first and only fungicide with the Group 52 mode of action, making it a valuable addition to wine grape fungicide programs.

Its mode of action stops nucleic acid metabolism via the inhibition of dihydroorotate dehydrogenase within *de novo* pyrimidine biosynthesis (DHODH). MIGIWA attacks the primary hypha that enters the plant, impeding the production of the pyrimidines thymine, cytosine and uracil. This inhibition process prevents further hyphal growth and spore formation.

A suspension concentrate, MIGIWA has superb crop safety and provides translaminar (locally systemic) activity with 7–10 days protection. MIGIWA is a highly compatible fungicide that mixes readily with water.



### Safety to Beneficials

MIGIWA is compatible with IPM programs. In laboratory tests, it was non-toxic to beneficial species including predatory mites, bees and parasitic wasps.

### Flexibility of Use

MIGIWA has a low use rate and excellent environmental profile when used as directed. MIGIWA has a zero-day re-entry period. Up to two applications of MIGIWA can be applied per season, with the final application no later than the growth stage E-L 29, berries peppercorn size (not >4 mm in diameter). Consult the AWRI Dog book for restrictions in grapes grown for export wine.

### Application

MIGIWA should be applied through a calibrated sprayer to ensure thorough, even coverage. Choose nozzle types and pressures to deliver a MEDIUM size droplet according to ASAE specifications. Use the dilute rate of 25 mL/100 L of water and, if using a concentrate sprayer, do not exceed a 3X concentration factor.

### Compatibility

MIGIWA has demonstrated excellent physical compatibility with a wide range of commonly used products, however not all products have been tested. For updated information, please refer to [agnova.com.au](http://agnova.com.au)

### Features

- Excellent and reliable grey mould control
- Group 52 fungicide – New mode of action
- Suitable for IPM
- Superb crop safety
- Low use rates
- Wide compatibility range

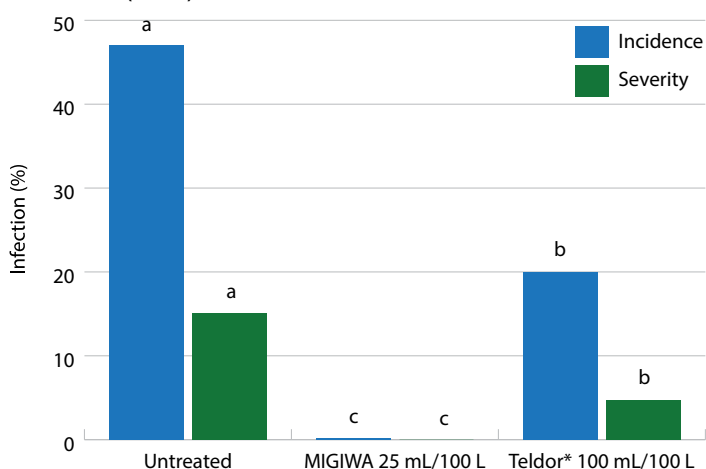


## MIGIWA provides Consistent, Robust Disease Control

### Grapes – Grey Mould

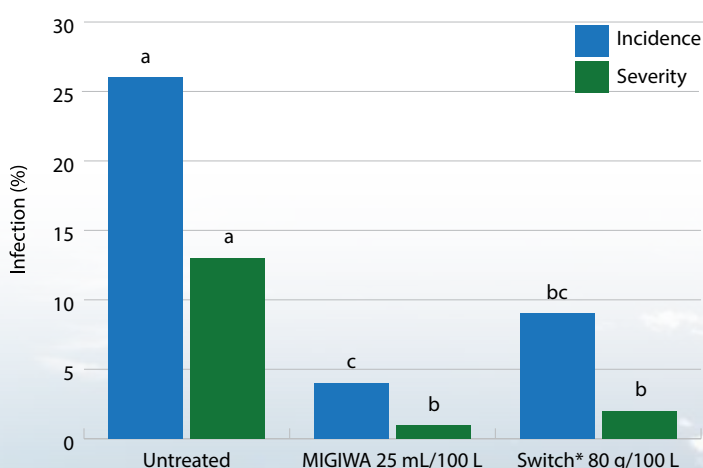
Report: 055-18-E1-19-432

Grey mould fruit infection in Grape cv. Chardonnay (WA) at harvest (2020)



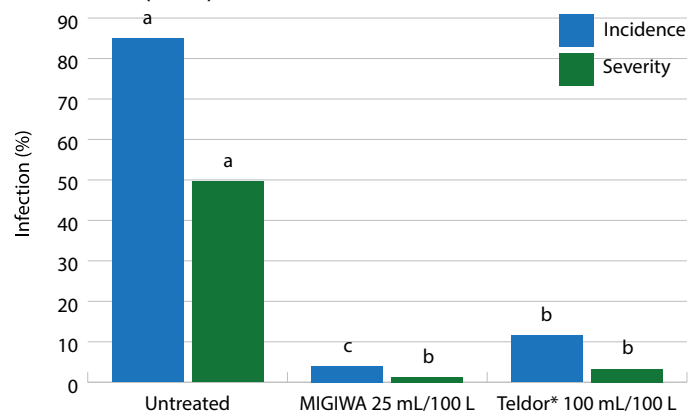
Report: 055-18-E1-19-469

Grey mould fruit infection in Grape cv. Sauvignon Blanc (Tas) at harvest (2020)



Report: 055-18-F6-20-453

Grey mould fruit infection in Grape cv. Chardonnay (WA) at 90 DALA (2021)



DALA = days after application

### Australian Trial Results

MIGIWA has been widely tested in Australia in the major wine grape growing regions. In these trials, MIGIWA gave excellent, robust control of grey mould under a range of disease pressures. When applied at 25 mL/100 L, MIGIWA was equivalent to or better than commercially available products for disease control.

## Timing

MIGIWA should be applied as part of a fungicide program to control the latent infection stages of grey mould, especially when conditions are conducive for disease development over flowering, as MIGIWA gets inside the flowers/fruit and knocks out latent infection.

Control of latent infection at flowering and later pre-bunch closure infection is the key to effective grey mould control, by not allowing disease to establish, which is then harder and more expensive to manage later in the season.

## Cost Effective - Early Season Disease Control

The application of MIGIWA early in the season at flowering and early berry development ensures the maximum effectiveness of MIGIWA against the grey mould primary infection phases.

A lower rate per hectare of MIGIWA is applied at this early stage of crop growth and spray coverage is more effective compared to later in the season when rates per hectare of fungicide are much higher and spray coverage is more difficult. This means growers will achieve a more cost-effective level of disease control with MIGIWA. Better bang for your buck!

Follow each MIGIWA application with botryticides from different mode of action groups in accordance with the label directions of those products.

## Fungicide Resistance Strategy

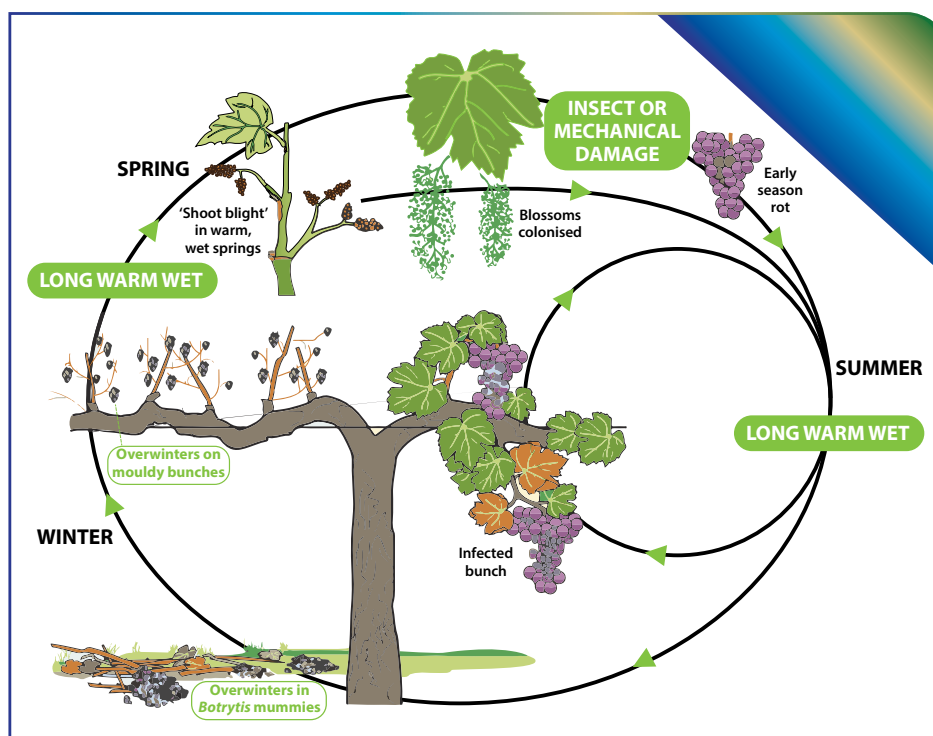
MIGIWA can be applied one or two times per season, with the final application no later than the growth stage E-L 29, berries peppercorn size (not >4 mm in diameter):

- Apply one application of MIGIWA per season if a total of 2–3 fungicide applications are planned for grey mould management in a season.
- Two applications of MIGIWA can be made per season if ≥4 fungicide applications are planned for grey mould management in a season.
- Do not apply consecutive sprays of MIGIWA.

Follow CropLife Australia resistance management strategies for grey mould in grapes to reduce the risk of fungicide resistance developing: <https://www.croplife.org.au/resources/programs/resistance-management/grape-grey-mould-bunch-rot/>



Grey mould in grapes



Grey mould of grapes disease cycle





## Directions For Use

CROP	DISEASE	RATE	WHP	CRITICAL COMMENTS
Wine grapes	Grey mould/ Botrytis bunch rot ( <i>Botrytis cinerea</i> )	Dilute spraying: 25 mL/100 L water	–	<p>Apply preventatively when conditions (varietal and climatic) are conducive to disease development as part of a grey mould management spray program.</p> <p>Up to two applications of MIGIWA can be applied per season, with the final application no later than the growth stage E-L 29, berries peppercorn size (not &gt;4 mm in diameter).</p> <p>Apply one application of MIGIWA per season if a total of 2–3 fungicide applications are planned for grey mould management in a season.</p> <p>Two applications of MIGIWA can be made per season if ≥4 fungicide applications are planned for grey mould management in a season. Do not use MIGIWA in consecutive applications for grey mould management.</p> <p>Applications for the management of grey mould should focus on key growth stages and weather conditions. Applications of MIGIWA can be between E-L 20 (10% cap-fall) and E-L 29 (berries peppercorn size).</p> <p>Apply by dilute or concentrate spraying equipment. Apply in sufficient water volume to obtain thorough coverage of the crop, especially flowers and fruit. As the crop grows, the required dilute spray volume will increase, and the sprayer setup and operation may also need to be changed. Refer to the section on concentrate spraying if low spray volumes are to be used.</p> <p>Apply the same amount of product per hectare to the target crop whether applying by dilute or concentrate spray volumes.</p> <p>Follow the CropLife Australia resistance management guidelines for grey mould in grapes.</p>

NOT TO BE USED FOR ANY PURPOSE, OR IN ANY MANNER, CONTRARY TO THIS LABEL UNLESS AUTHORISED UNDER APPROPRIATE LEGISLATION.



**Three key diseases are covered with this tank mixture of AgNova products over the critical flowering period ensuring excellent control and crop safety.**

Information and data referred to herein were generated using products and rates that were registered at the time, may include extracts from the product label and does not constitute the complete directions for use. Always read and follow product labels.  
AgNova Technologies Pty Ltd shall not be liable for any consequential or other loss or damage relating to the supply or subsequent handling or use of this product, unless such liability by law cannot be lawfully excluded or limited. All warranties, conditions or rights implied by statute or other law which may be lawfully excluded are so excluded. Where the liability of AgNova Technologies Pty Ltd for breach of any such statutory warranties and conditions cannot be lawfully excluded but may be limited to it re-supplying the product or an equivalent product or the cost of a product or an equivalent product, then the liability of AgNova Technologies Pty Ltd for any breach of such statutory warranty or condition is so limited.  
© Copyright AgNova Technologies 2024. \* MIGIWA, KINOPROL and FLUTE are registered trademarks of Nippon Soda Co. Ltd. Zampro is a registered trademark of BASF.  
\* Registered trademarks. MIGWINAGN240711

For more  
information scan  
the QR code or  
contact your local  
Area Sales Manager

